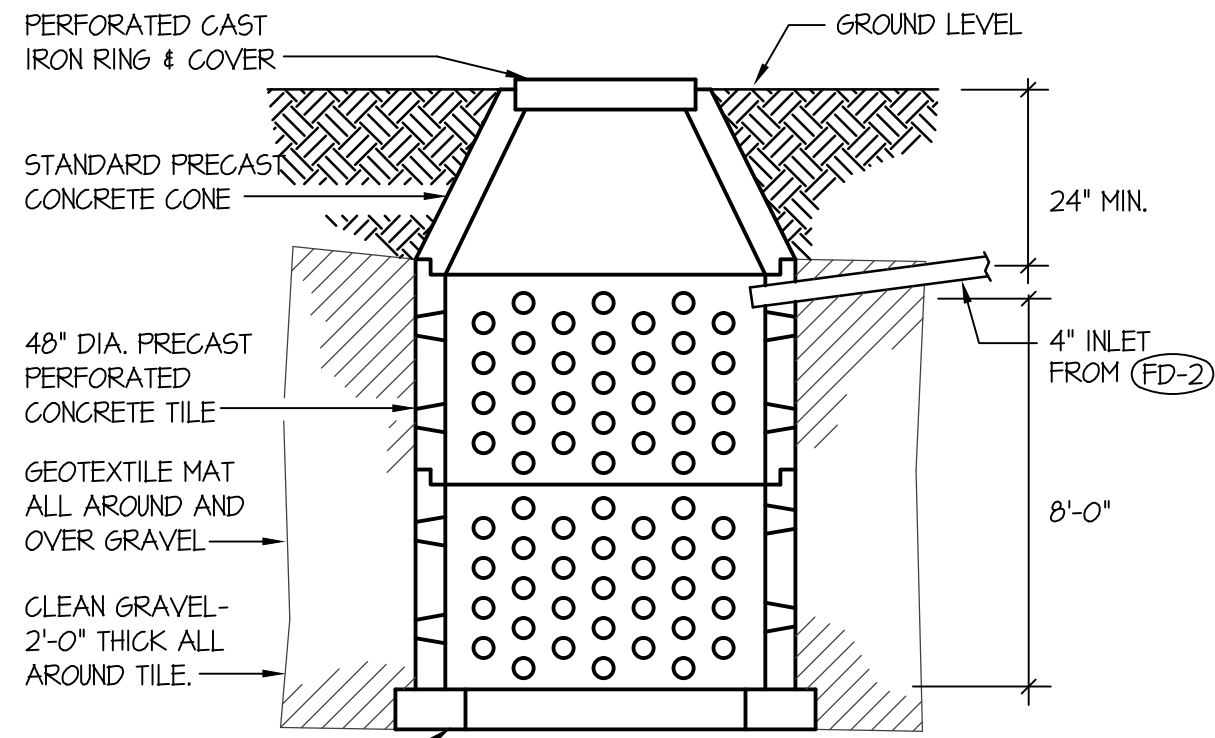
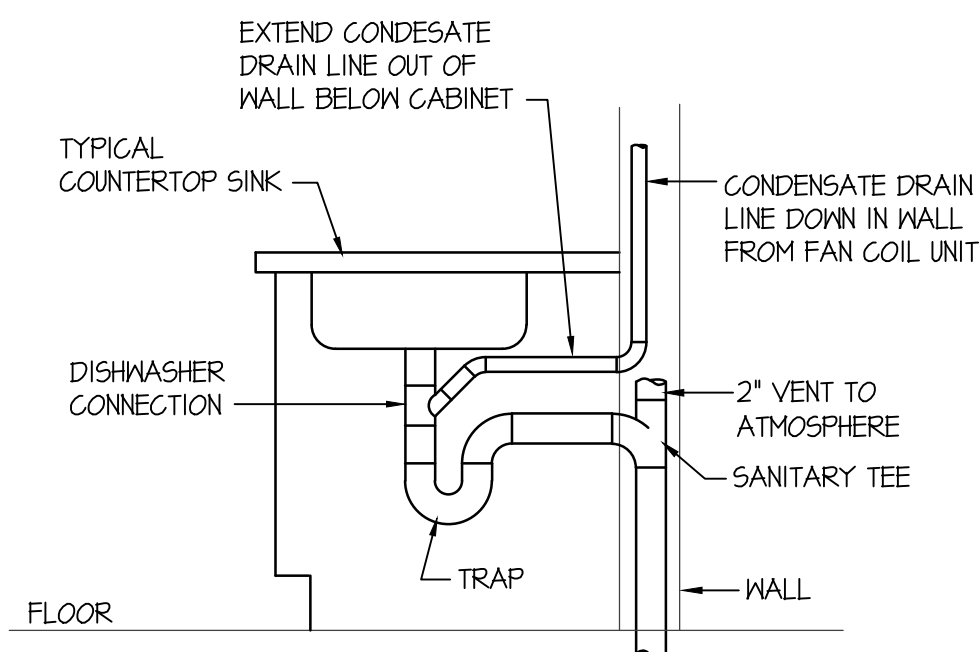


SUMP PUMP DETAIL
NO SCALE



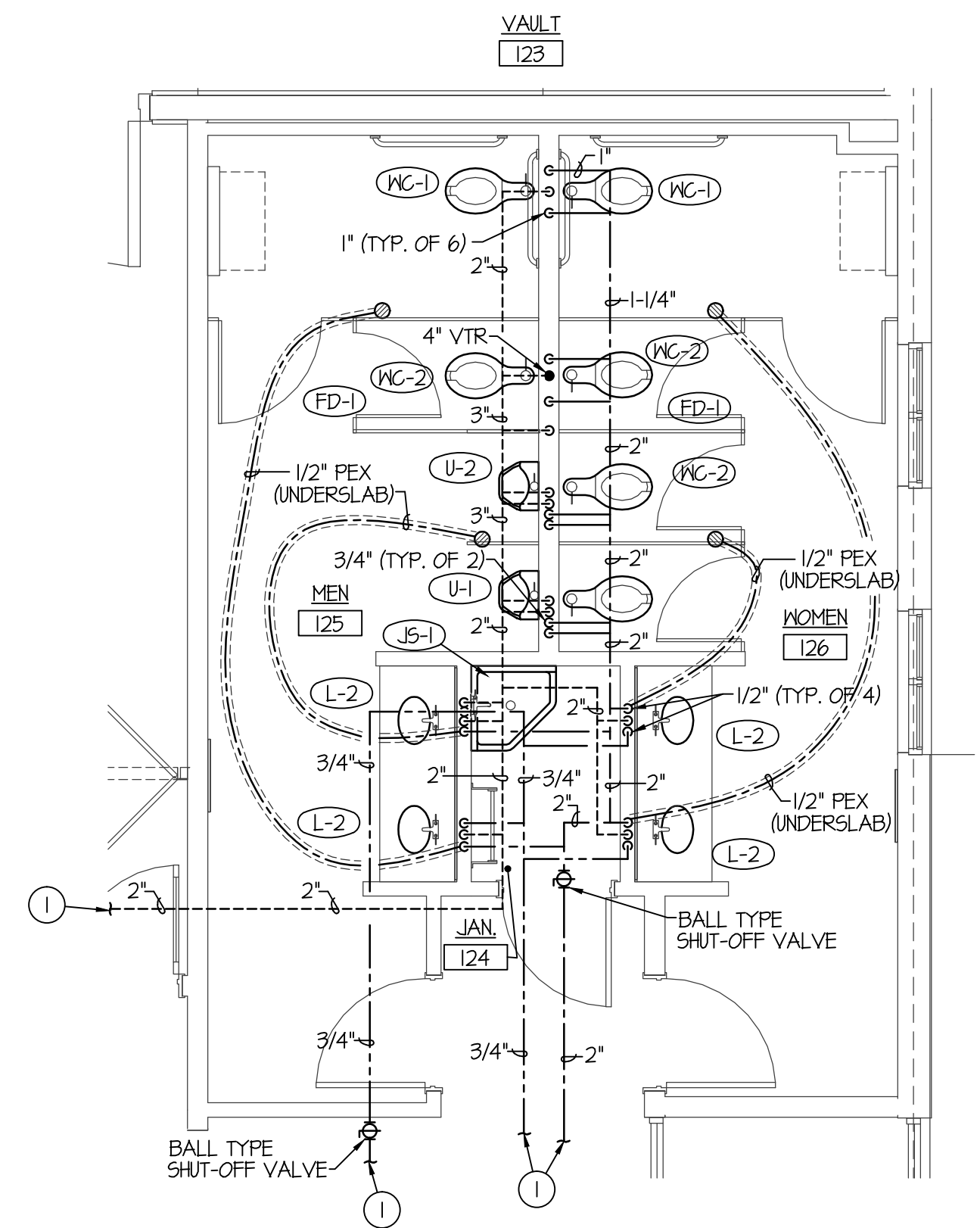
DRYWELL DETAIL
NO SCALE



NOTE:
CONDENSATE CONNECTION TO
WALL MOUNTED LAVATORY SIMILAR

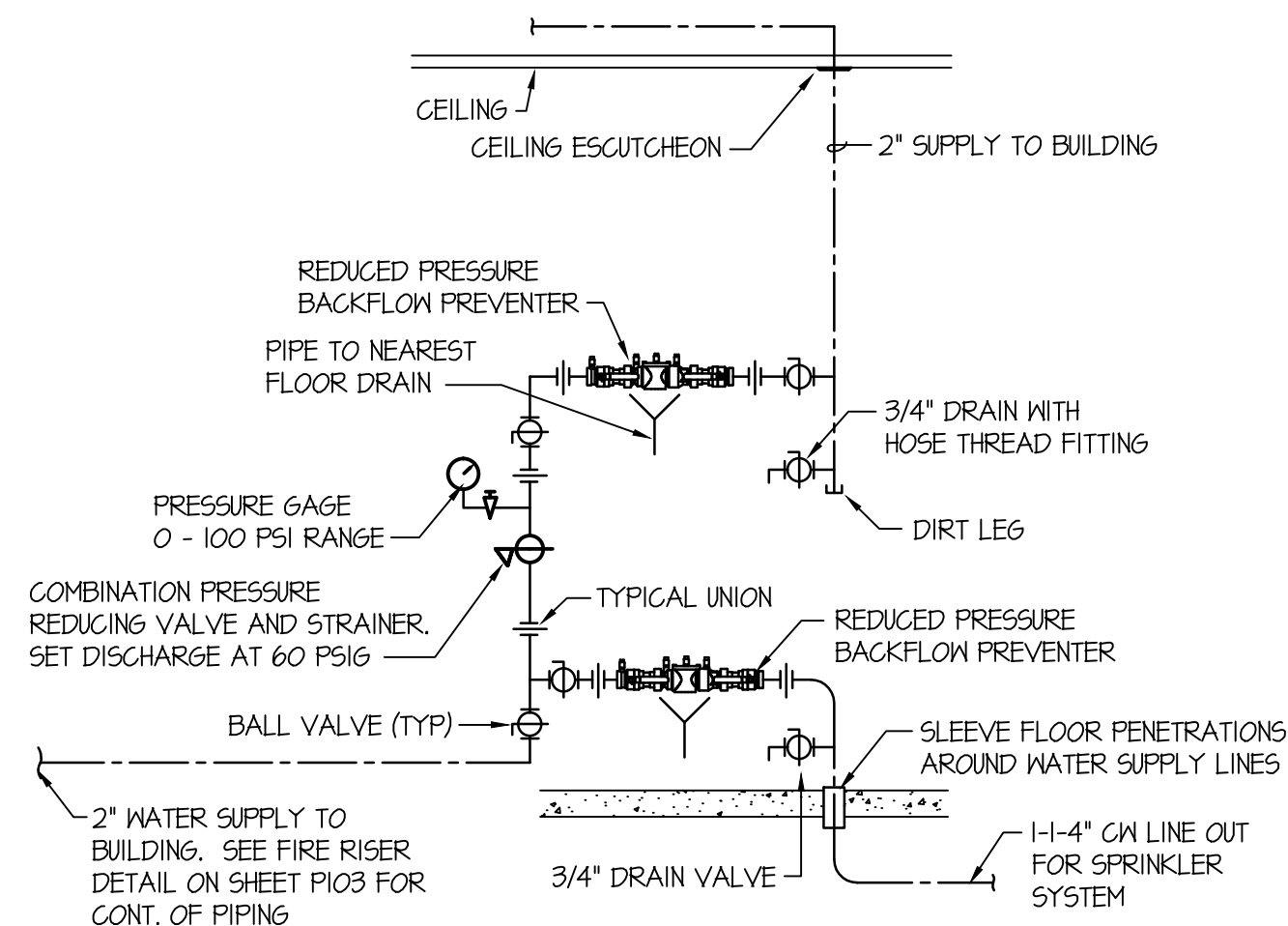
COND. DRAIN CONNECTION DETAIL
NO SCALE

FIXTURE SCHEDULE					
SYM.	DESCRIPTION	HOT	COLD	WASTE	VENT
DF-1	BI-LEVEL DRINKING FOUNTAIN - ELKAY MODEL EZ-STL8W6LK WITH EZH2O BOTTLE FILLER FLEXI-GUARD BUBBLERS, 1/2" STOP AND 1-1/2" P-TRAP. PROVIDE ALL INTERCONNECTING PIPING AND DRAIN.	---	1/2"	1-1/2"	1-1/2"
DS-1	ROOF DRAIN DOWN SPOUT - JAY R SMITH MODEL IT10 SIZE 4" WITH ROUGH BRONZE FINISH AND 4" DRAIN LINE CONNECTION.	---	---	4"	---
DS-2	ROOF DRAIN DOWN SPOUT - JAY R SMITH MODEL IT10 SIZE 6" WITH ROUGH BRONZE FINISH AND 6" DRAIN LINE CONNECTION.	---	---	6"	---
FD-1	2" FLOOR DRAIN WITH PRIMER - ZURN Z-415B WITH 5" NICKEL-BRONZE STRAINER AND 2" DEEP SEAL P-TRAP WITH ZURN I022 TRAP PRIMER.	---	---	2"	2"
FD-2	4" FLOOR DRAIN - ZURN Z-503 HEAVY DUTY AREA DRAIN WITH 5" NICKEL-BRONZE STRAINER 4" WASTE LINE FROM DRAIN TO DRYWELL. SEE DETAIL ON SHEET P102.	---	---	4"	---
FS-1	FLOOR SINK - ZURN Z-1900-KC WITH WHITE ENAMEL FINISH, DOME STRAINER AND 4" DEEP SEAL P-TRAP. PROVIDE HALF GRATE OVER SINK.	---	---	4"	2"
JS-1	FLOOR MOUNTED SERVICE SINK - KOHLER K-6110 "WHITBY" W/ K-8440 WIRE RIM GUARD, K-8428 FAUCET ASSEMBLY & K-9142 STRAINER & DEEP SEAL P-TRAP. HOSE & HOSE CLAMP	1/2"	1/2"	2"	2"
L-1	ADA WALL MOUNTED LAVATORY - KOHLER 2023 "GREENWICH" (SIZE 20"x18") WITH K-T115 OPEN GRID STRAINER, SLOAN EBF-181 BATTERY FAUCET. 1/2" STOPS AND 1-1/2" P-TRAP. PROVIDE INSULATING JACKET ON WATER AND WASTE PIPE. PROVIDE CONCEALED ARM CARRIER SYSTEM.	1/2"	1/2"	1-1/2"	1-1/2"
L-2	UNDER COUNTER MOUNTED LAVATORY - KOHLER MODEL K-2210-O UNDERCOUNTER SINK "CAXTON" WITH SLOAN EBF-181 BATTERY FAUCET, K-T115 OPEN GRID STRAINER, 1/2" BALL STOPS AND 1-1/4" P-TRAP.	1/2"	1/2"	1-1/2"	1-1/2"
L-3	WALL MOUNTED PENAL LAVATORY - AGORN MODEL 1652 ADA WALL MOUNTED LAVATORY WITH INTEGRAL FAUCET AND WALL CARRIER. PLUMBER TO PROVIDE 1-1/2" P-TRAP, SUPPLIES AND BALL STOPS IN ACCESSIBLE PANEL.	1/2"	1/2"	1-1/2"	1-1/2"
OD-1	ROOF OVERFLOW DRAIN - JAY R SMITH MODEL 1080 SIZE 4" WITH 2" HIGH WATER DAM, UNDERDECK CLAMP AND 36" SQUARE FLASHING.	---	---	4"	---
RD-1	ROOF DRAIN - JAY R SMITH MODEL 1010 SIZE 4" WITH UNDERDECK CLAMP AND 36" SQUARE FLASHING.	---	---	4"	---
RP-1	CIRCULATING PUMP - GRUNDFOS MODEL UP15-10BT BRONZE PUMP WITH 3/4" FLANGES (2 GPM @ 5' OF HEAD) 120/60/1	3/4"	---	---	---
S-1	UNDERCOUNTER SINGLE COMP. SINK WITH FAUCET - ELKAY MODEL ETRU3160PD 16"x18"-1/2"x8" SINK S.S. CONSTRUCTION, 3-HOLE FAUCET DRILLINGS, LK-4100 LEVER HANDLE FAUCET, LK-44 STRAINER, 1-1/2" P-TRAP & 1/2" BALL TYPE STOP VALVES.	1/2"	1/2"	1-1/2"	1-1/2"
SP-1	SUMP PUMP - GRUNDFOS MODEL GCSA1 UNILIFT WITH 5 GPM AT 15' HEAD. INSTALL IN 18" DIA BASIN WITH FLOAT SWITCH OPERATORS AND 1-1/2" DISCHARGE LINE WITH CHECK VALVE. PROVIDE 8'-0" LONG CORD (120/60/1)	---	---	1-1/2"	PUMPED
U-1	ADA WALL MOUNTED URINAL - KOHLER K-4484-T "FRESHMAN" WITH WALL CARRIER & SLOAN REGAL BATTERY FLUSH VALVE. MOUNT AT ADA LEVEL.	---	3/4"	2"	2"
U-2	WALL MOUNTED URINAL - KOHLER K-4484-T "FRESHMAN" W/ WALL CARRIER & SLOAN REGAL BATTERY FLUSH VALVE.	---	3/4"	2"	2"
WC-1	ADA FLUSH VALVE WATER CLOSET - KOHLER K-4368 "HIGHCLIFF" WITH ELONGATED BOWL, K-4670C WHITE OPEN FRONT SEAT, SLOAN REGAL BATTERY FLUSH VALVE AND CHINA BOLT CAPS.	---	1"	4"	2"
WC-2	FLUSH VALVE WATER CLOSET - KOHLER K-4350 "WELCOME" WITH ELONGATED BOWL, K-4670C WHITE OPEN FRONT SEAT, SLOAN REGAL BATTERY FLUSH VALVE AND CHINA BOLT CAPS.	---	1"	4"	2"
WC-3	WALL MOUNTED FLUSH VALVE WATER CLOSET - AGORN MODEL 1675 PENAL WARE S.S. WALL MOUNTED TOILET WITH WALL CARRIER. MOUNT AT ADA HEIGHT. REFER TO ARCH. DWGS.	---	1"	4"	2"
WH-1	ELECTRIC WATER HEATER - A.O. SMITH MODEL ECRT-50 50 GALLON ELECTRIC WATER HEATER WITH 4500 WATT UPPER & LOWER ELEMENTS (240/60/1). AMTROL ST-5 EXPANSION TANK, T&P VALVE. PROVIDE POWERS 3/4" LM-491-10 MIXING VALVE.	3/4"	3/4"	---	---



LARGE SCALE TOILET ROOM PLUMBING PLAN

SCALE: 1/4" = 1'-0"



VERTICAL WATER PRESSURE REDUCING STATION

NO SCALE

PLAN NOTES:

- 1 SEE PLUMBING FLOOR PLAN ON SHEET P101 FOR CONTINUATION OF PIPING.

Myers ■ Anderson

Architecture
Interior Design
Landscape Architecture

101 North Main Street ■ Pocatello, Idaho 83204 ■ Tel. (208) 232-3711 ■ Fax. (208) 232-5762
849 Front Street, Suite 202 ■ Evanston, Wyoming 82930 ■ Tel. (307) 789-0934

BEAR LAKE COUNTY COURTHOUSE

PARIS, IDAHO --- BEAR LAKE COUNTY

PROJECT:

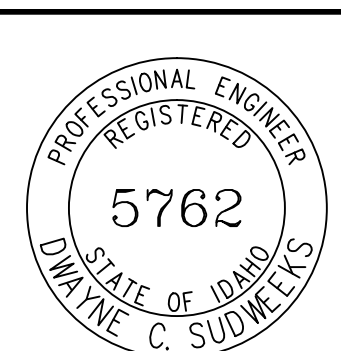
SHEET TITLE:
LARGE SCALE T.R. PLUMBING PLAN & SCHEDULES

CONTRACTOR SHALL VERIFY ALL DIMENSIONS & CONDITIONS SHOWN OR IMPLIED

DRAWING SCALE APPLIES TO 22" X 34" SHEET SIZE

REVISION DATE

ORIGINAL DRAWING SIGNED BY: DWAYNE C. SUDWEEKS
DATE ORIGINAL SIGNED: JAN. 9TH, 2019
ORIGINAL ON FILE AT ENGINEERED SYSTEMS ASSOCIATES
1355 EAST CENTER, POCATELLO, IDAHO 83201



Engineered Systems Associates
1355 EAST CENTER
POCATELLO, IDAHO 83201
PHONE: (208) 233-0501
FAX: (208) 233-0529
EMAIL: esa@engsystems.com
ESA JOB NUMBER: 18026

DRAWN BY: SR
CHECKED BY: DCS
JOB NUMBER: 46548-13B
PROJECT DATE: JAN, 2019
SHEET OF
P102